

## MAPISEND Documentation

MapiSend is a standalone application included as part of the Print Wizard utilities set. MapiSend provides a way for you to send a file through Microsoft MAPI to any MAPI service you currently have installed.

### ***What Is MAPI?***

MAPI is the Microsoft Messaging API, a set of message handling tools for Windows 95, 98, ME, 2000 and NT. These services are commonly loaded when you install Internet Explorer or Outlook Express (as basic MAPI), or when you install Microsoft Outlook, Office or Exchange (extended MAPI). Among other possibilities, the basic MAPI protocols support e-mail and faxing.

For e-mail, you must have a configured MAPI e-mail reader and have set up the reader for sending mail. This is basically available once you have set up Outlook or Outlook Express.

For faxing, you must have installed a MAPI-compatible fax application, and must be working with Microsoft Outlook. With Windows 98, Microsoft Fax was included and works nicely (this can also be installed in Windows 95, but may not be installed by default – it depends on which service packs you have installed). For Windows ME, 2000 and NT, other 3<sup>rd</sup> party faxing software may be necessary.

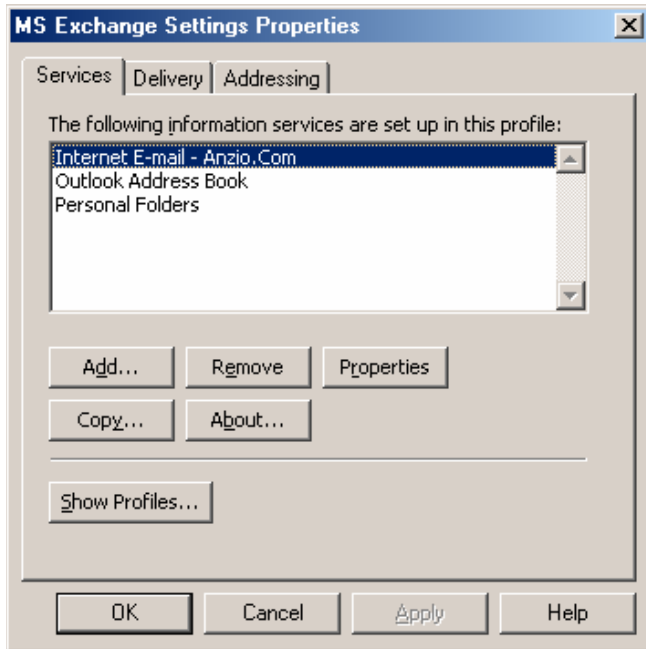
### ***How do you set/change MAPI options?***

Basic MAPI works from the installed default e-mail setup. MAPI works off the idea of profiles, a set of services available to a particular logged in person. These are controlled by two different Control Panel dialogs, MAIL and INTERNET OPTIONS.

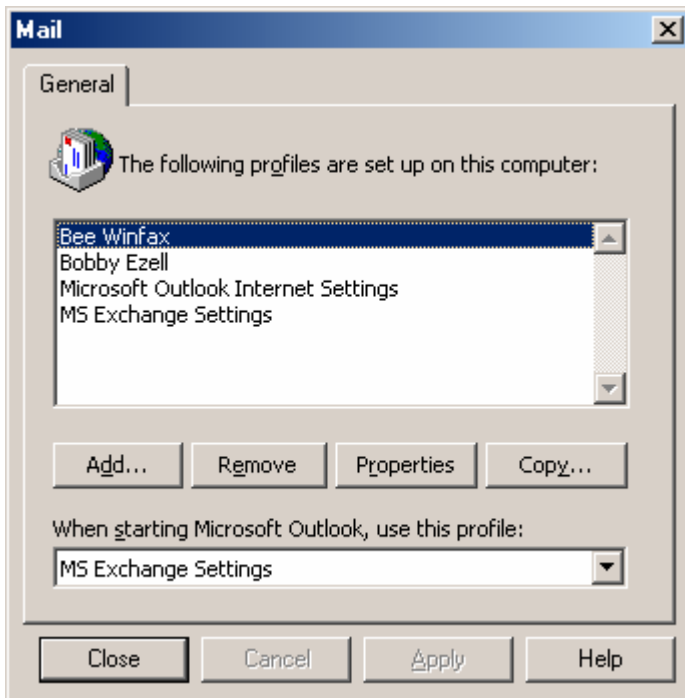
### **Mail**

From the Control Panel : Mail dialog, you can set up the user profiles and the properties for the various services. When you install Outlook or Outlook Express certain defaults are assumed, so you may want to check these settings.

## MAPISEND Documentation



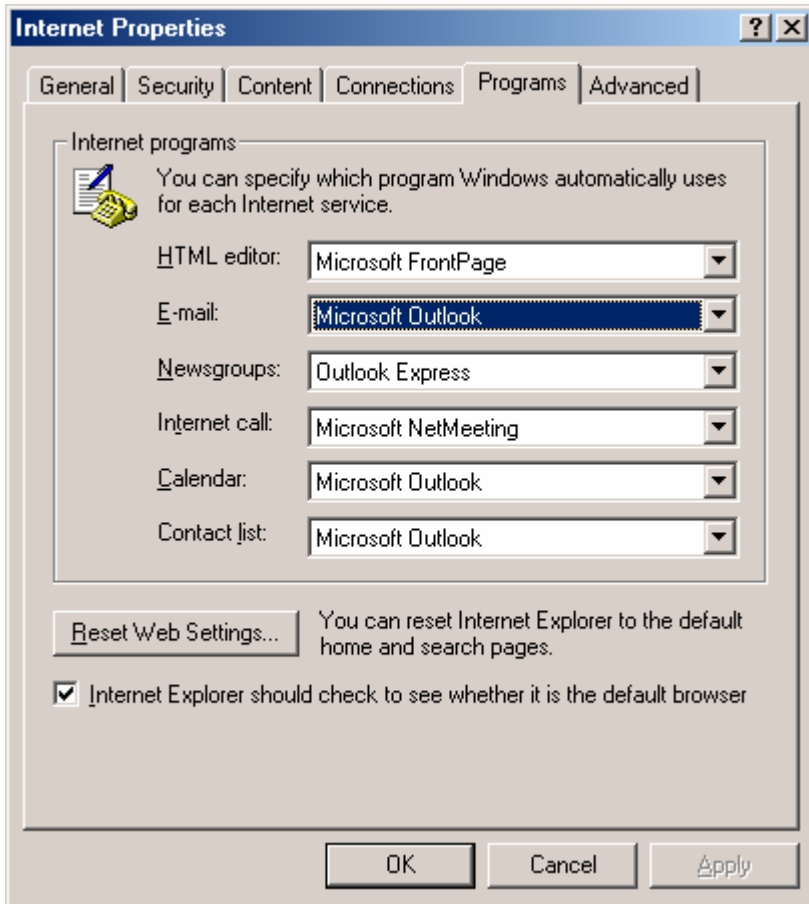
Mail determines the available services to your system, and hence a selected profile. Clicking on "Show Profiles" will bring up the following dialog.



Clicking on Properties here displays a screen similar to the prior screen, but showing only those services available for a selected profile.

## Internet Options

Internet Options do not have a lot to do with the various MAPI settings, except to determine the default application to use for e-mail services. This option covers more than just e-mail however, it covers the behavior of MAPI in general. If Outlook Express is selected in the Applications for e-mail, then simple MAPI is used, whereas if Outlook or Exchange is selected, extended MAPI is used. Also this setting determines whether or not faxing will work correctly.



Normal options include Microsoft Outlook, Outlook Express or Netscape Messenger. All three will work for sending e-mail (see our notes below), but only Microsoft Outlook will work for interfacing to faxing.

## ***MapiSend***

MapiSend is designed to provide a command-line interface between the various MAPI functions and the user, without having to delve into writing your own MAPI application. Primarily, MapiSend provides Print Wizard with a method of e-mailing and faxing through the default installed mail and fax services.

The general format for MapiSend is:

MapiSend [options] filename [filename2...]

where options can be

/n<note text>	The text to include as the body of the message if there are embedded spaces, be sure to include the text in quotes).
/f<faxnumber>	To fax, include the number here, just as you would dial it
/r<recipient>	The recipient name to include (quote it if embedded spaces).
/s<subject>	The subject text to include (quote it if embedded spaces).
/e<email>	The email address to send to
/p<profile>	The Outlook/Exchange profile to use (if this is included, the default service is used, be sure to enclose in quotes if spaces).
/i<include note file>	The full path to a file that contains a body of text (replaces the /n note (if spaces, enclose file name in quotes).
/d	Turn on debug messages to aid in debugging errors, including bringing up the send dialogs to manually send messages.

At least one file name is required. You must include a /e or /f option to either send e-mail or send a fax. If you are using Microsoft Outlook, you must also include the /p option with a valid user profile.

## ***How it works – Notes on various configurations***

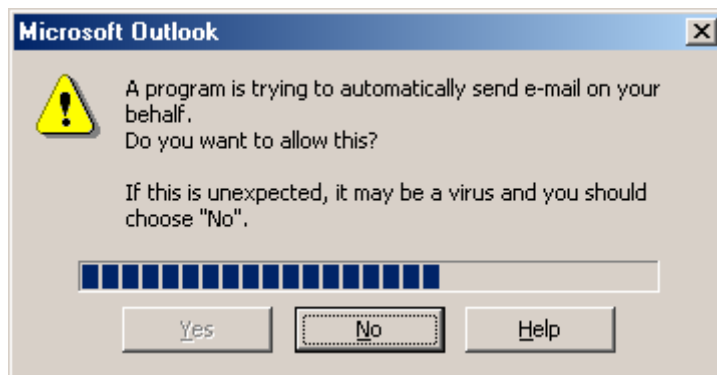
The following will go through several configuration notes. These fall in to the categories of:

- 1) Microsoft Outlook e-mailing
- 2) Outlook Express e-mailing
- 3) Netscape Messenger (version 4.0 or later) e-mailing
- 4) Microsoft Outlook faxing
- 5) Outlook Express and Netscape Messenger faxing
- 6) Others

Note that Microsoft Outlook and Exchange behave pretty much the same way.

## Microsoft Outlook e-mailing

- You must specify a profile name with the /p<profile> option
- The “From” address and name will be from the profile setting
- You may get the following Security dialog in later versions of Outlook, depending on your configuration



- You may experience delays, depending on a) whether you are set to send e-mails automatically, and b) if your server experiences any delays. If you are not set for automatic e-mailing for some reason, you may need to bring up Outlook to begin the send.
- Attachments come in as regular attachments, even if they are a standard text (.txt) file.

## Outlook Express e-mailing

- You don't need to include any profile name
- The “From” address is determined from the default e-mail settings, not from a profile, so this could appear different than that for a profile
- If any bad or unsent e-mails are in the OutBox, you may get a dialog box up even if there is no “/d” option. You will have to close this to continue. If everything in your message is formatted correctly, your message should still go out (read through the messages carefully).
- Attachments come in as regular attachments, even if they are a standard text (.txt) file.

## Netscape Messenger e-mailing

- No Netscape profile is necessary and does not apply for MAPI.
- “From” comes from the default e-mail configuration.
- Any attachments with the .txt extension will usually become part of the body text (no way around this that I know of).

## Microsoft Outlook faxing

- Use the “/f<phone number>” tag with complete phone number (no dialing properties apply).
- Include a profile that has the Microsoft Fax or the 3<sup>rd</sup> party fax service available.
- “From” comes from the profile name.
- This does not apply to Windows ME, 2000 or NT. Windows 98 comes with Microsoft Fax installed, and it depends on which service pack you use for Windows 95. It can also be downloaded from Microsoft for Windows 95, but will not work under ME, 2000 or NT.

## Outlook Express and Netscape Messenger faxing

If you try to send a fax when either program is set as the default e-mail client (Internet Options), they send the request through as an e-mail service with the phone number becoming the e-mail address to send to. Most all e-mail servers will then reject this as “User Unknown” and cause an error dialog box to appear.

## Others

There are other 3<sup>rd</sup> party e-mail applications available. The question is whether they support MAPI the same way. Many applications claim to be MAPI compliant, but may not support inter-program access.

There are also other 3<sup>rd</sup> party faxing applications available. Again while these may support MAPI, they may not support inter-program access correctly. Also note that a fax application without an e-mail application will be totally dependent on the selected e-mail application for MAPI and may not work correctly as a remote service (Winfax Pro is an example of this – while it supports MAPI as an Outlook helper application, it does not support MAPI as the default fax for Outlook).

## Examples

### **Sending an e-mail with Microsoft Outlook as the e-mail reader**

```
Mapisend /s"Subject line" /n"Note for the body" /euser@domain.com /p"My Profile" file1.txt file2.xls
```

### **Sending an e-mail with Microsoft Outlook and an “include” file for the body**

```
Mapisend /s"Subject line" /ibody.txt /euser@domain.com /p"My Profile" file1.txt file2.xls
```

## MAPISEND Documentation

### **Sending an e-mail with Outlook Express or Netscape Messenger as the e-mail reader**

Mapisend /s"Subject line" /n"Note for the body" /euser@domain.com file1.txt file2.xls

### **Sending an e-mail with Microsoft Outlook and an "include" file for the body**

Mapisend /s"Subject line" /ibody.txt /euser@domain.com file1.txt file2.xls

### **Sending a fax with Microsoft Outlook as the e-mail reader**

Mapisend /p"My Profile" /f1-503-624-0760 file1.txt file2.xls

## **Errors**

The following are just some of the possible errors (taken from the Microsoft include libraries). See Mapi or Outlook specific documentation for more information on each error. We do not guarantee the accuracy of these as they may change from release to release of Mapi. These are merely here as an example and to perhaps help understand what error Windows Mapi may be passing to you.

MAPI_E_NO_SUPPORT	02
MAPI_E_BAD_CHARWIDTH	03
MAPI_E_STRING_TOO_LONG	05
MAPI_E_UNKNOWN_FLAGS	06
MAPI_E_INVALID_ENTRYID	07
MAPI_E_INVALID_OBJECT	08
MAPI_E_OBJECT_CHANGED	09
MAPI_E_OBJECT_DELETED	0A
MAPI_E_BUSY	0B
MAPI_E_NOT_ENOUGH_DISK	0D
MAPI_E_NOT_ENOUGH_RESOURCES	0E
MAPI_E_NOT_FOUND	0F
MAPI_E_VERSION	10
MAPI_E_LOGON_FAILED	11
MAPI_E_SESSION_LIMIT	12
MAPI_E_USER_CANCEL	13
MAPI_E_UNABLE_TO_ABORT	14
MAPI_E_NETWORK_ERROR	15
MAPI_E_DISK_ERROR	16
MAPI_E_TOO_COMPLEX	17
MAPI_E_BAD_COLUMN	18
MAPI_E_EXTENDED_ERROR	19
MAPI_E_COMPUTED	1A
MAPI_E_CORRUPT_DATA	1B
MAPI_E_UNCONFIGURED	1C
MAPI_E_FAILONEPROVIDER	1D
MAPI_E_UNKNOWN_CPID	1E
MAPI_E_UNKNOWN_LCID	1F

## MAPISEND Documentation

```
/* Flavors of E_ACCESSDENIED, used at logon */

MAPI_E_PASSWORD_CHANGE_REQUIRED      20
MAPI_E_PASSWORD_EXPIRED              21
MAPI_E_INVALID_WORKSTATION_ACCOUNT   22
MAPI_E_INVALID_ACCESS_TIME          23
MAPI_E_ACCOUNT_DISABLED              24

/* MAPI base function and status object specific errors and warnings */

MAPI_E_END_OF_SESSION                100
MAPI_E_UNKNOWN_ENTRYID              101
MAPI_E_MISSING_REQUIRED_COLUMN      102
MAPI_W_NO_SERVICE                   103
```